

item

Presse-Mitteilung

© item Industrietechnik und Maschinenbau GmbH
Friedenstrasse 107-109 D-42699 Solingen
Tel.: (0212) 65 80 300 / Fax: (0212) 65 80 310
✉ info@item-international.com
www.item-international.com

Speicher-Datum: Solingen, 04.04.2006
Anzahl Seiten: 2
Anzahl Wörter: 321
Anzahl Zeichen: 2.508

Pressekontakt: Nicole Grewer
Tel.: (0212) 65 80 322
✉ n.grewer@item-international.com

Product innovation Spring 2006: New possibilities of panel fastening

The item MB building kit system arises two different new possibilities of fastening panel elements. Panel-Clamping Strips 8 are ideal for retrofitting panel elements (preferably made of Acrylic Glass, PET-G or Polycarbonate) into a closed profile frame. The results are dustproof panel-clamps for a multifaceted use. High standards are reached and they can be used in easily in clean rooms.

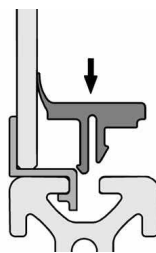
The clou: The panel element does not require any further processing.

The panel-clamp strips 8 consist of two components; an aluminium strip and a flexible plastic strip.

A second strip, of flexible plastic, is then used to secure the panel element and the aluminium strip in the groove. This creates a frame which has the same optical and functional characteristics as the surrounding profile construction. If necessary, the plastic strip can be levered out in order to remove the panel element from the frame. The Panel-Clamping Strips secure the panel element so that there is an offset of only 2 mm to the outer edge of the profile.



Name der Bilddatei: Scheibeneinfassleiste 8.tif

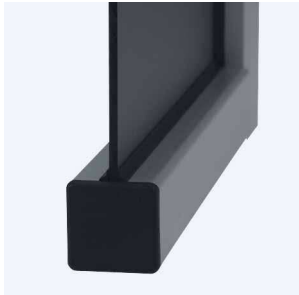


Name der Bilddatei: Schnittzeichnung Scheibeneinfassleiste 8.tif

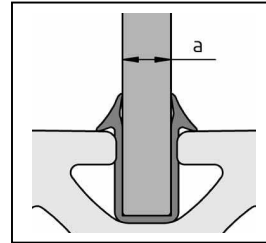
Double-lip seal for panel clamping directly into grooves.

To fix a panel directly into the groove the new double-lip seal was developed. It provides a sealing function and prevents direct contact with the aluminium profile.

Double-Lip Seal 8 4-6mm is ideal for all types of panel elements — including those made of plastic or safety glass. Double-Lip Seal 8 is best installed using soapy water. It is then slipped onto the panel element and pushed into the profile groove. The profile frame is closed around the panel element.



Name der Bilddatei: Einfassprofil 8.tif



Name der Bilddatei: Schnittzeichnung Einfassprofil 8.tif

item Industrietechnik und Maschinenbau GmbH, based in Solingen, Germany, is the developer and supplier of the MB Building Kit System which provides individually designed solutions to all aspects of industrial equipment engineering. The Building Kit System is based on a series of aluminium profiles, a series of matching fastening techniques and numerous functional elements.